



## TrackManager

### TrackManager will allow you :

- Export / Import of the Tracks' files between your ADSGPS and your computer, it will allow you to make a copy and to exchange your tracks' files with your friends via electronic mail.
- See your tracks with the points of GPS reference marks : START, SECTOR, SPEED on Google Earth, with a simple click.
- Create Tracks: LAP, TRIAL, SLALOM, RALLY with the GPS coordinates. Coordinates that you can raise on **Google Earth** or other available Software on internet.
- Rename / Delete tracks' files

Help us to create a TRACKS database  
that will be accessible on the website ALFANO.COM  
Send us your tracks' files via **TrackManager**  
with a simple click.

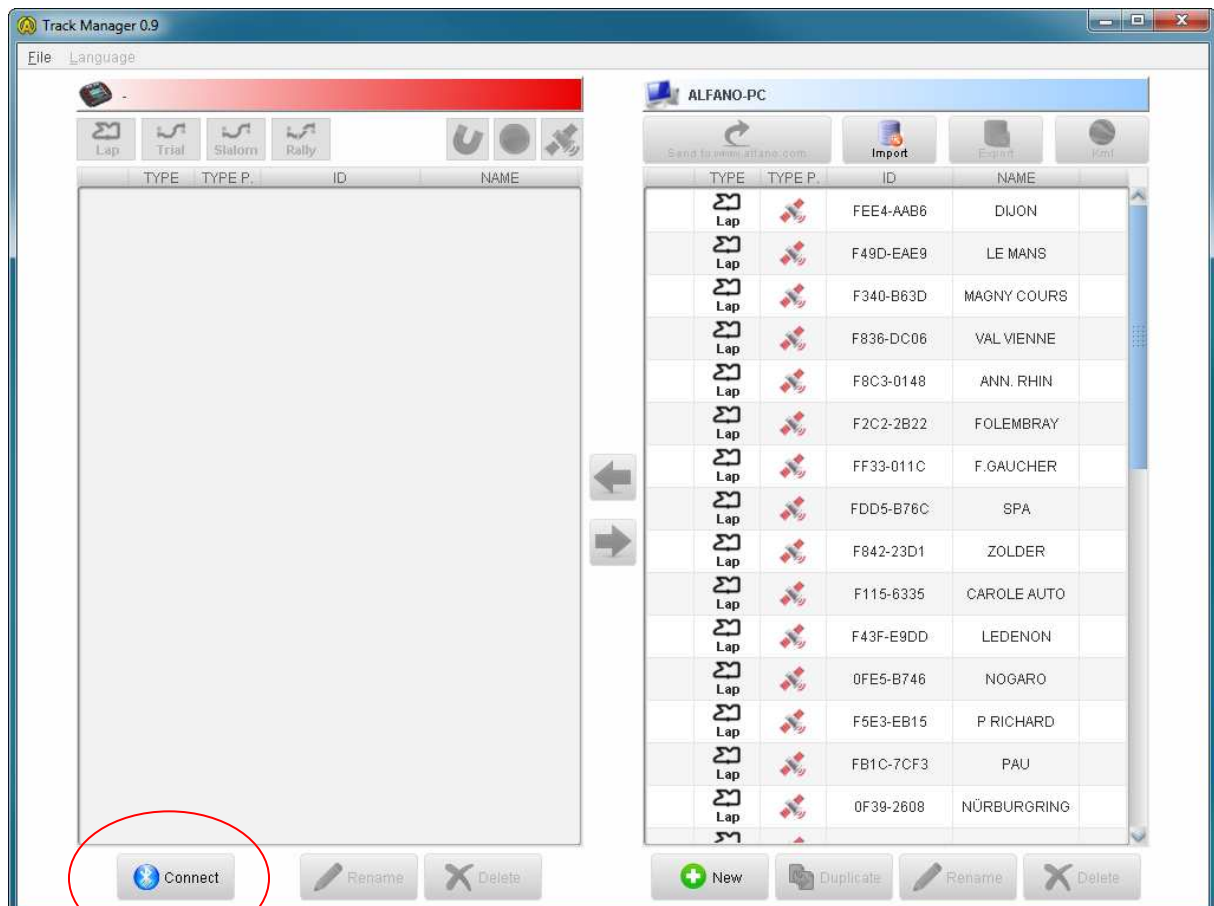
## Connect with your ADSGPS TRACKMAGER:

- 1) Enable your Bluetooth ADSGPS. Home page press the button at the bottom right.

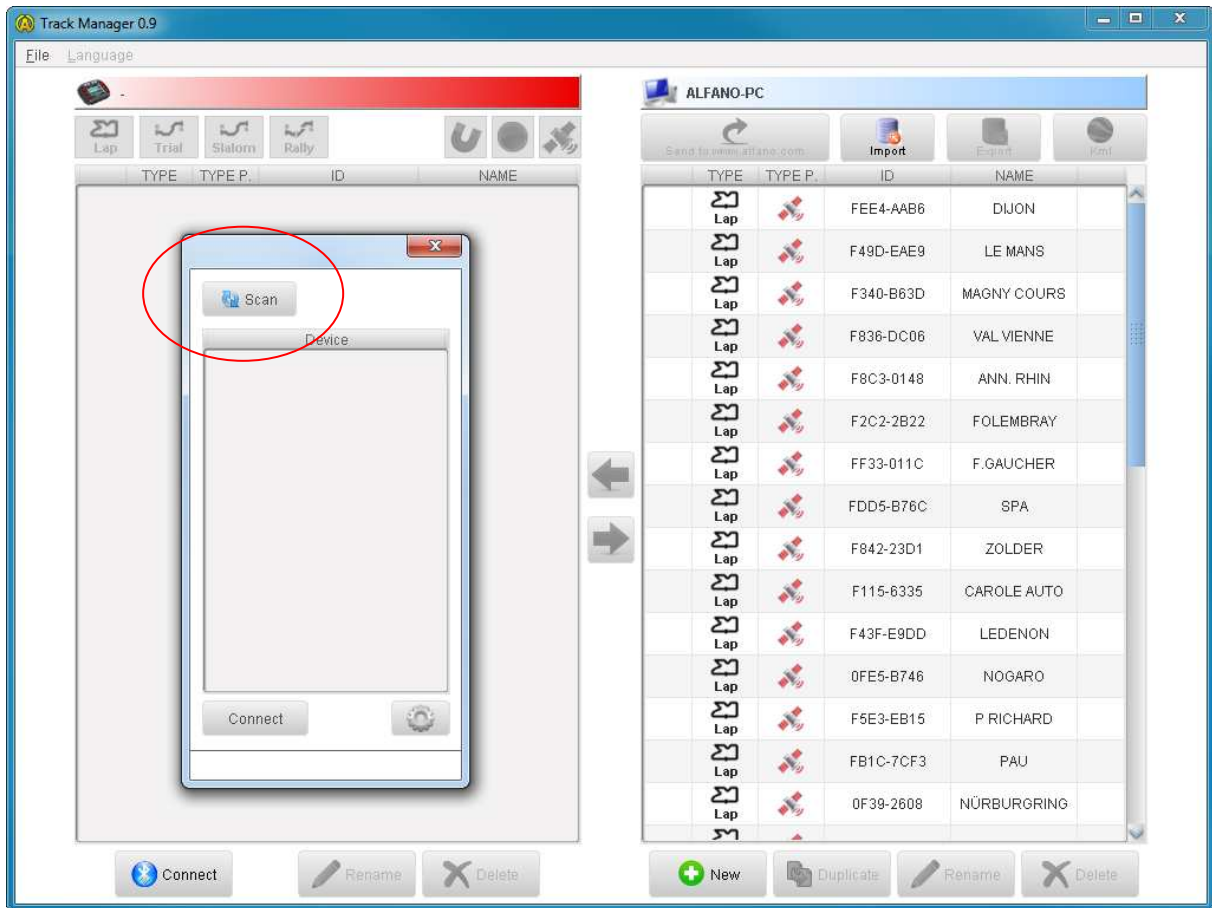


The information on this window will allow you to connect.

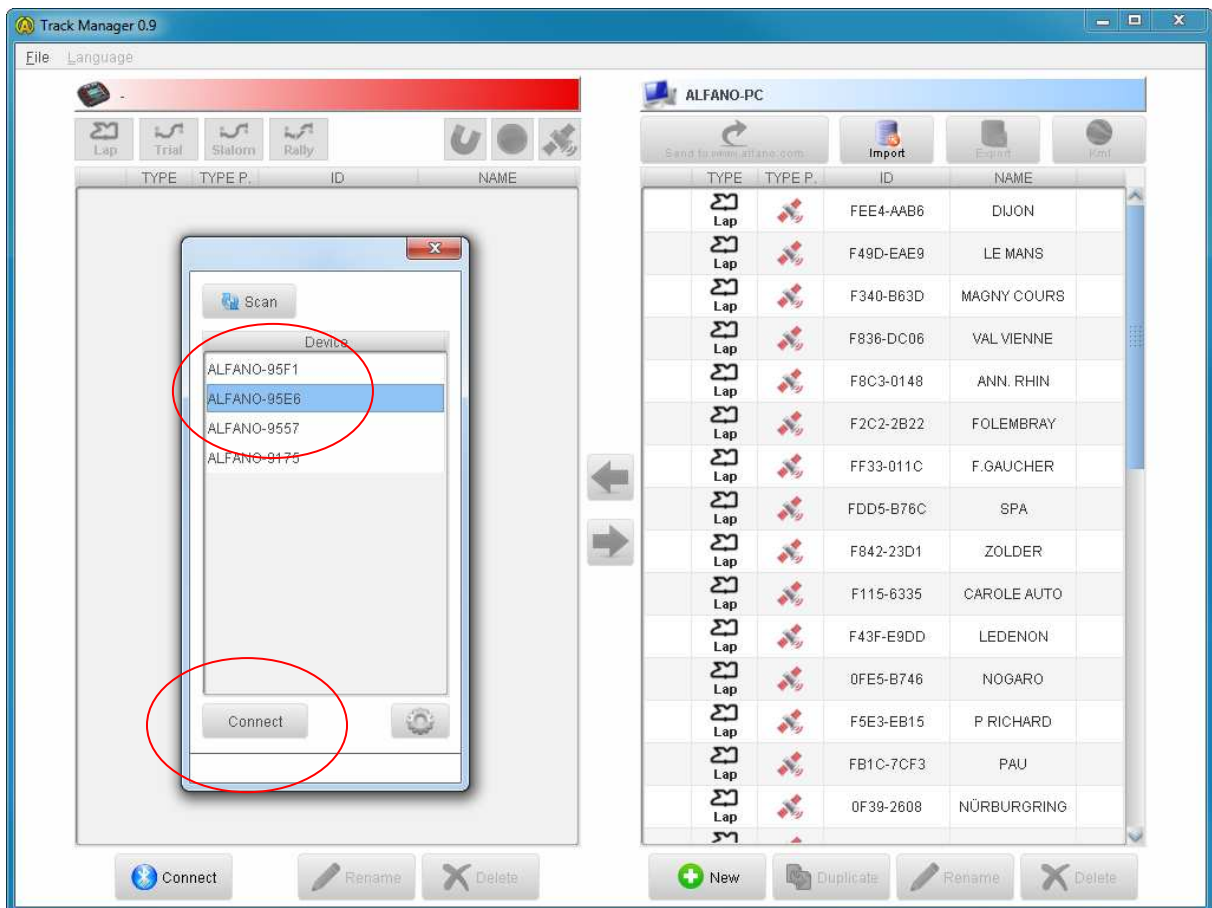
- 2) Press "Connect".



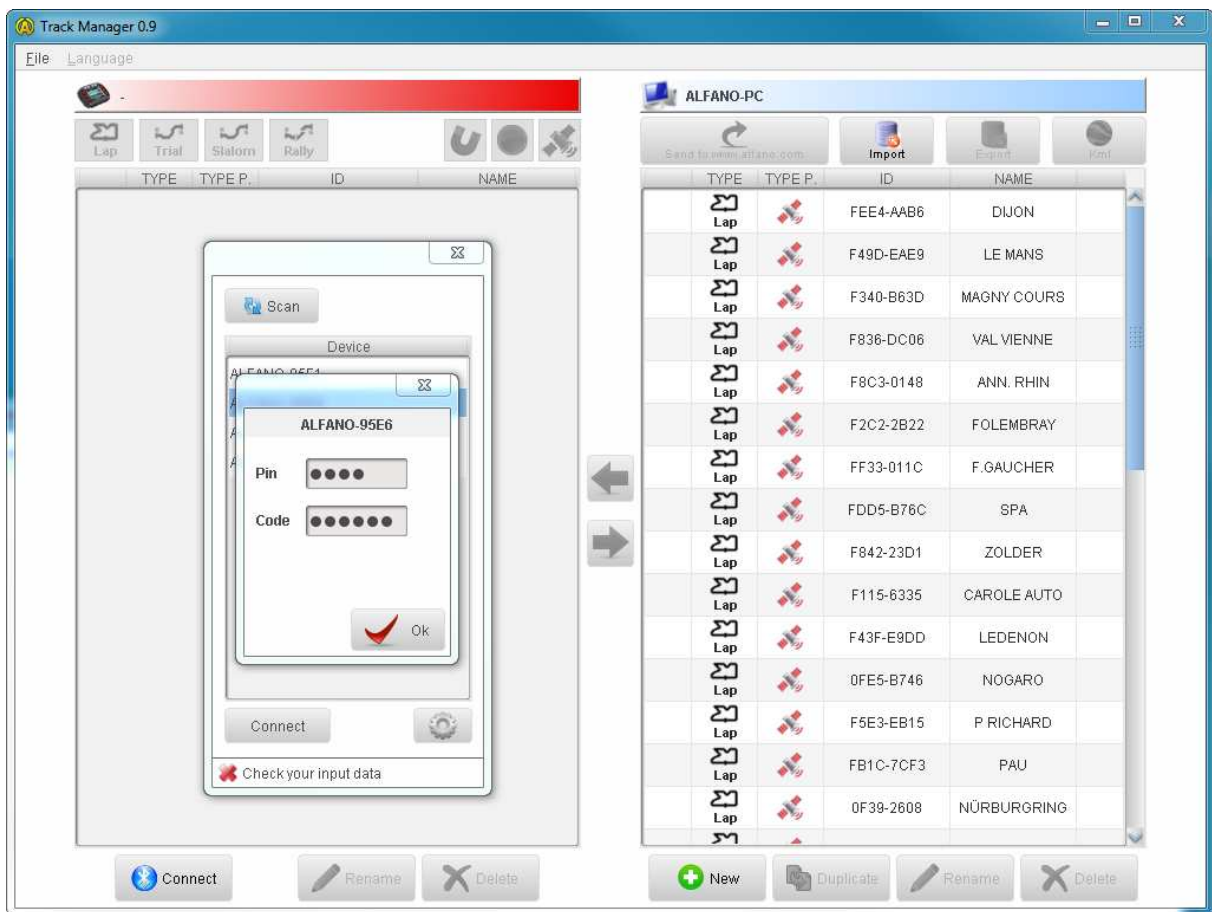
- 3) Press "Scan", wait a moment to see your device appear.



- 4) Select your device (ALFANO-95E6), this Code "Name" is on the screen of your ADSGPS, then press "Connect".



- 4) Inserted the code "PIN" (0017) for the first connection (this code will subsequently stored in your PC), then inserted the personal code that is in the "Setup" menu, under "Bluetooth" menu of your ADSGPS. Note, only the code can be changed at will. By default this code is (000000).



- 5) During synchronization, the TrackManager shows in the left window, the tracks already stored in your ADSGPS.

