





Tyrecontrol2 A-1910



User Manual (EN)

Introduction

The **TYRECONTROL2** allows you to :

- Measure the air pressures
- Adjust the air pressures (only to decrease)
- Measure the temperatures on the surface of the tyres and the asphalt
- Memorize these data until 495 sets for 5 vehicles, either 5x99 sets.
1 set = until 34 captures of data + Hour and Date « before  and after  race »
- With the software "VISUALTYRE" : recover the data recorded for a better analysis and also bring a help to the configuration of your device

Replacing the batteries

Switch off the device before removing the used batteries to avoid all loss of data recorded. Insert the two new batteries into the device properly and make sure the terminals "+" and "-" are aligned correctly.

Battery Type : 2 x AA

Important : It is imperative to use quality batteries manufactured by reputed brands in order to prevent battery leakage into the device.



A failure caused by the battery acid voids the warranty.

Caution

The Tyrecontrol is a device of precision and, of this fact, it is sensitive to the electromagnetic currents coming from the engine ignition.

Keep therefore the Tyrecontrol distant (minimum 50cm) of the engine ignition to avoid false readings or a device 'freezing' when the engine is running.

Switching on the TYRECONTROL

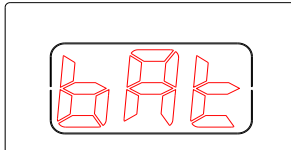
- Either normally pressing the central button , the TYRECONTROL starts :
WITHOUT the backlight.
- Either pressing for 2 seconds the same button, the TYRECONTROL starts :
WITH the backlight .

Switching off the TYRECONTROL

When the Tyrecontrol is not in the menu « OFF », it dies out automatically after 10 minutes of non use.

Weak battery detection

As soon as the Tyrecontrol detects a weak level of batteries, the word « BAT » appears in most menus while blinking.



Working

The TYRECONTROL has 8 main options represented by 8 icons :



RECORD




This option consists in recording new data.

Procedure : I want to record the pressures and the temperatures for the vehicle 3, with the n°079 assigned. (See menu « *SETUP* », page 12, « **assignment of the numbers of the vehicles** »)



1) With the help of the buttons    , select the icon « **RECORD** » (figure 1)

▪ In the position « RECORD », the Tyrecontrol displays :

- The hour and the date in real time 
- The pressure in real time (allows a fast measure) 
- The pressures of the last « Set » of the vehicle 1 

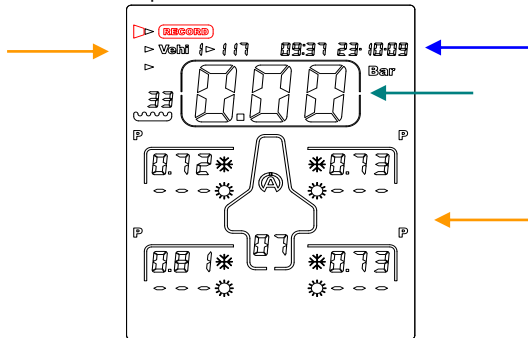




Figure 1

2) With the button  or  select the icon « **Vehi** » (figure 2)

3) With the button  or  select the vehicle wanted (5 to the total) (figure 2)

▪ In the position « VEHI », the Tyrecontrol displays :

- The hour and the date of the last « Set » of the Vehicle 3
- The pressures of this « Set »

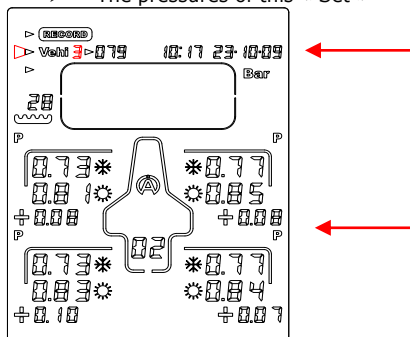


Figure 2

4) With the button  or , select the « **FACE** » (figure 3)

▪ In the position « **FACE** », the Tyrecontrol displays :

- The hour and the date in real time
- The pressure or the temperature in real time (according to the programmed sequence of capture)

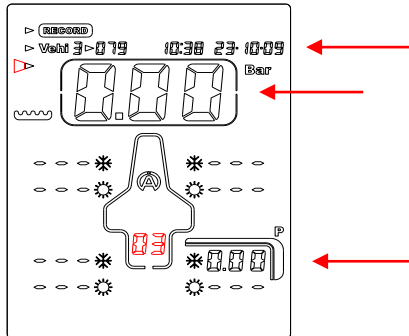



Figure 3

On the example (figure 3), the Tyrecontrol is ready to record, for the vehicle 3, a set of captures in the Set « 03 » before race , (« Set » free of the vehicle 3) while starting with a capture of pressure on the right rear tyre.

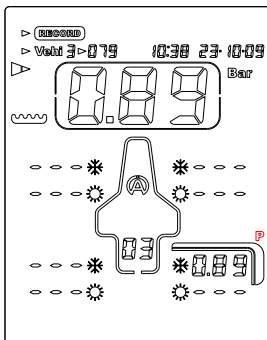


Figure 4

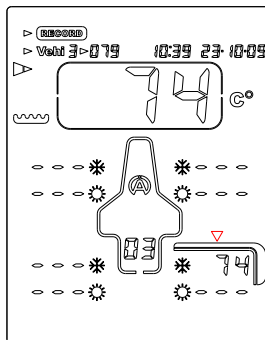


Figure 5

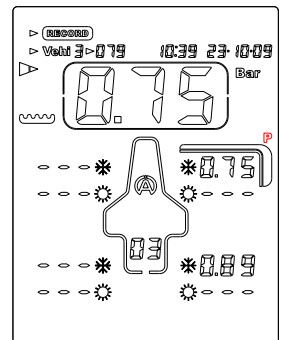




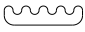


Figure 6

5) Apply the mouthpiece of the Tyrecontrol on the valve of the tyre (figure 4)

6) Press the central button  to record the measured pressure as well as the hour and the date of the moment, then, the point of capture displayed to the screen moves automatically following the sequence programmed in the menu SETUP. In the example (figure 5), the device positions itself on the measure of the temperature in the center of the left rear tyre.

- 7) Apply the sensor of temperature on the tyre as indicated on the screen by the arrow (figure 5).
- 8) Press the central button  to record the measured temperature and prepare the Tyrecontrol on the next point of capture (Figure 6).
- 9) Operate this way until the end of the programmed sequence.

Note :

the point of capture asphalt  will be chosen automatically at the end of every sequence, « before  and after  race ».

- 10) Since the hold of the temperature asphalt, the Tyrecontrol returns automatically to the menu « RECORD ».



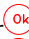


Note : it is possible to program a sequence of capture (temperatures and pressures) in the order desired (See Menu « SETUP » page 15, « **configuration of the captures sequence** »).

RECALL

This menu consists in recalling the recorded data.

Procedure : I want to visualize the data of the vehicle 1 with the n° 117 assigned.



- 1) With the help of the buttons , select the icon « **RECALL** » (figure 8)
 - In the position « RECALL », the Tyrecontrol displays :
 - The hour and the date in real time
 - The pressures of the last « Set » of vehicle 3
- 2) With the button  or , select the icon « **Vehi** » (figure 9)
- 3) With the button  or , select the vehicle wanted (figure 9)
 - In the position « VEHI », the Tyrecontrol displays :
 - The hour and the date of the last « Set » of the Vehicle 1
 - The pressures of this « Set »

4) With the button  or , select the « **FACE** » (figure 10)

- In the position « CADRAN », the Tyrecontrol displays :
 - Same way as in the position « VEHI »

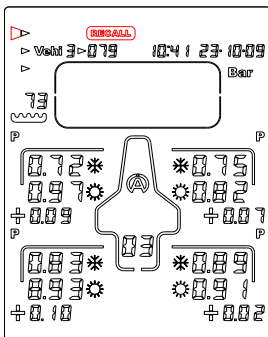


Figure 8

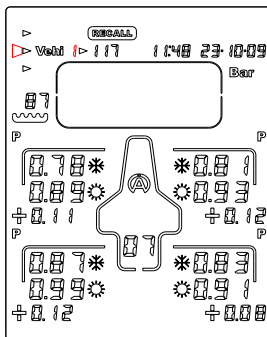


Figure 9

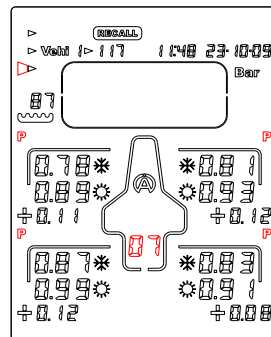




Figure 10

On the example « Figure 10 », the Tyrecontrol displays for the vehicle 1, the first phase of data of the last « Set » recorded, that is to say the tires pressures before  and after  race + the gaps.

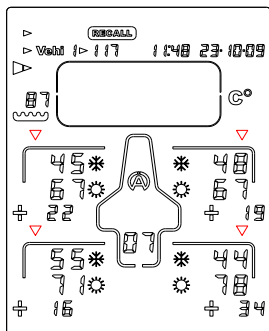


Figure 11

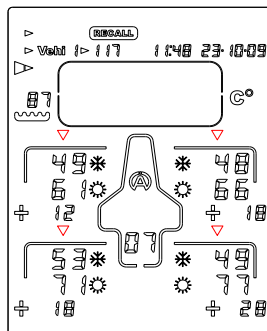


Figure 12

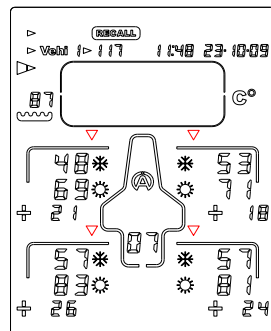





















Figure 13

5) Press the button  or  : the Tyrecontrol displays the second phase of data, that is to say the outside temperatures of the tires, before  and after  race + the gaps (figure 11).

- 6) Press again the button  or  : the Tyrecontrol displays the third phase of data, that is to say the temperatures in the center of the tires, before  and after  race + the gaps (*figure 12*).
- 7) Press again the button  or  : the Tyrecontrol displays the last phase of data, that is to say the inside temperatures of the tires, before  and after  race + the gaps (*figure 13*).
- 8) Press again the button  or  : the Tyrecontrol displays the first phase of data of first Set.
- 9) Press systematically the button  or  to browse all data recorded correspondent in the selected vehicle.
- 10) Use the button  : to browse the data recorded in the inverse sense.


- The hour and the date displayed above on the right indicate the moment where the hold of captures of the data has been done, before race  (if not yet captures after race) or after race  of « Set » displayed.

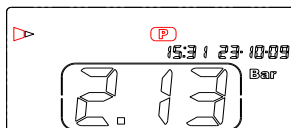


This menu consists in measuring the pressure.

Procedure :



- 1) With the help of the buttons  , select the icon « **P** ».
- 1) Apply the mouthpiece of the Tyrecontrol on the valve of the tyre.




The hour and the date are displayed in real time.

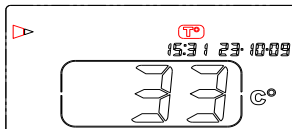


This menu consists in measuring the temperature. The hour and the date are displayed in real time.

Procedure :









- 1) With the help of the buttons , select the icon « **T°** ».
- 2) Apply the temperature sensor A481 on the tire.



This menu consists in erasing the recorded data.

Procedure :



- 1) With the help of the buttons , select the icon « **RST** » (figure 14)
- 2) With the button  or , select the icon « **Vehi** » (figure 15)
- 3) With the button  or , select the vehicle wanted (figure 15)
- 4) Press the central button  during 1 second, to erase all data of vehicle 1 (figure 16)

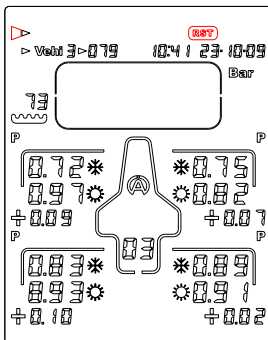


Figure 14

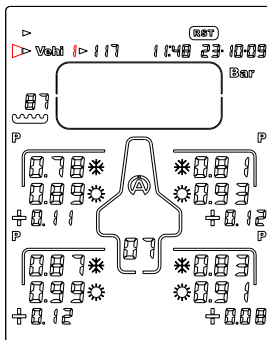


Figure 15

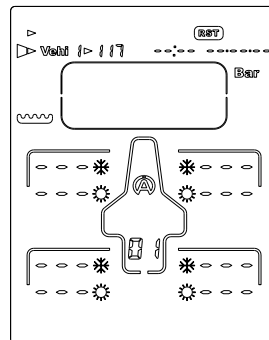


Figure 16



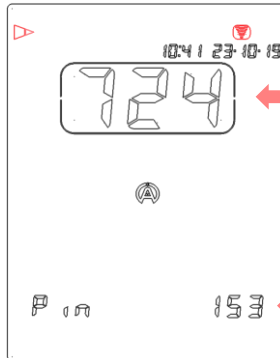
Bluetooth

This menu consists of activating the Bluetooth and being able to transfer the recorded data to an application on Android or iOS. Download the APP for free on the Apple Store or Google Play.

Procédure :



A l'aide des boutons , sélectionnez l'icône



← ID number of Tyrecontrol2

← Pin number to be introduced the first time in the APP

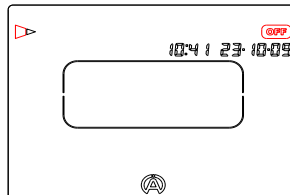
OFF

This menu consists in switching off the Tyrecontrol.

Procedure :



1) With the help of the buttons , select the icon :



2) Wait for 3 seconds.


Note : when the Tyrecontrol is not in the menu « OFF », it dies out automatically after 10 minutes of non use.

SETUP

These menus consist in configuring various parameters of the Tyrecontrol :

- 01) Assignment of the numbers of the vehicles** « menu 01 » (page 12)
- 02) Regulating of the clock and the calendar** « menu 02 » (page 13)
- 03) Choice of the unit Bar/PSI** « menu 03 » (page 14)
- 04) Choice of the unit C°/F°** « menu 04 » (page 14)
- 05) Choice of the vehicle** « menu 05 » (page 15)
- 06) Configuration of the sequence of the captures** « menu 06 » (page 15)
- 07) Calibration of the Pressure sensor** « menu 07 » (page 18)
- 08) Calibration of the Temperature sensor** « menu 08 » (page 19)
- 09) Information Menu : Serial number and Firmware number of the device**

Procedure to reach the SETUP :


- 1) The Tyrecontrol must be stopped.
- 2) Press the central button  during minimum 5 seconds, the Tyrecontrol starts in the first menu SETUP : « **Assignment of the numbers of the vehicles** ».

Procedure to browse the menus SETUP :

Press the button  or 

Procedure to leave the mode SETUP :


- 1) After the menu « **Calibration of the Temperature sensor** »,



- 2) Press the central button  on « EXIT », the Tyrecontrol starts in its normal working on mode « RECORD ».

01) Assignment of the numbers of the vehicles :


Procedure :




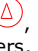
1) In this window, press the central button  to enter in the menu, « Ent » disappears.

2) With the button  or , select the vehicle wanted, choice from 1 to 5,

Vehi 5 >   


3) Press the button  to modify the number of the vehicle, choice from 0 to 999,


Vehi 5 >   

4) With the buttons  , modify the number of the vehicle. To activate the fast scrolling of the numbers, maintain the pressed button more than 1 second.

Vehi 5 >   

To assign a number to another vehicle :

5) Press the button  to come back behind, you just need to repeat the operations as explained above from the line 2.

6) Press the central button  to leave the menu.

Note : After having come out of the menu, only the « Vehi 1 » with its assigned number will be visible.

Important :

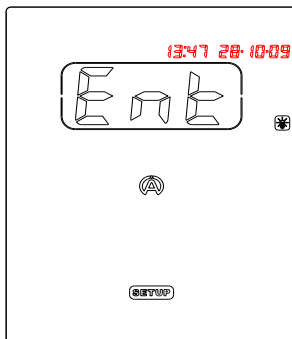
- If the number of the vehicle 1 is adjusted on zero,











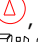











Vehi 1 >   

when using the Tyrecontrol, the system won't permit to choose another vehicle.

02) Regulating of the clock and the calendar :

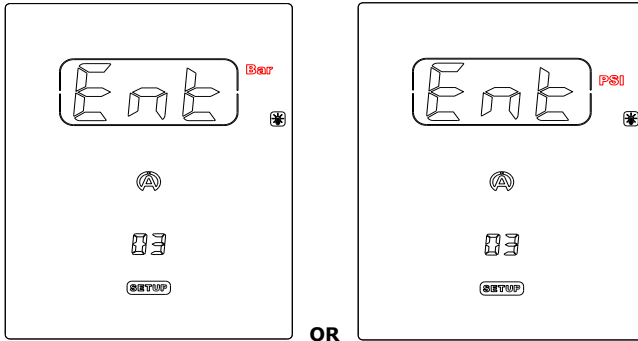
Procedure :



- 1) In this window, press the central button  to enter in the menu, « Ent » disappears.
- 2) With the buttons  , modify the hour,

- 3) Press the button  to be able to modify the minutes,
- 4) With the buttons  , modify the minutes. To activate the fast scrolling of the numbers, maintain pressed more than 1 second.

- 5) Press the button  to be able to modify the day calendar,
- 6) With the buttons  , modify the day calendar,

- 7) Press the button  to be able to modify the month,
- 8) With the buttons  , modify the month,

- 9) Press the button  to be able to modify the year,
- 10) With the buttons  , modify the year,

- 11) Press the button , to come back behind,
- 12) Press the central button , to come out of the menu.

03) Choice of the unit Bar/PSI :

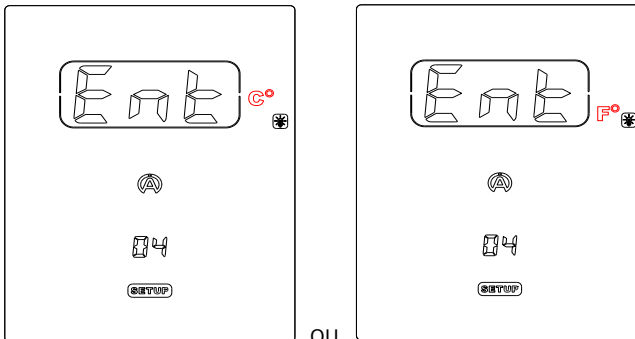
Procedure :



- 1) Owing one of these two windows, press the central button **Ok** to enter in the menu, "Ent" disappears.
- 2) With the button **▽** or **△**, modify the unit,
- 3) Press the central button **Ok** to come out of the menu.

04) Choice of the unit °C/°F :

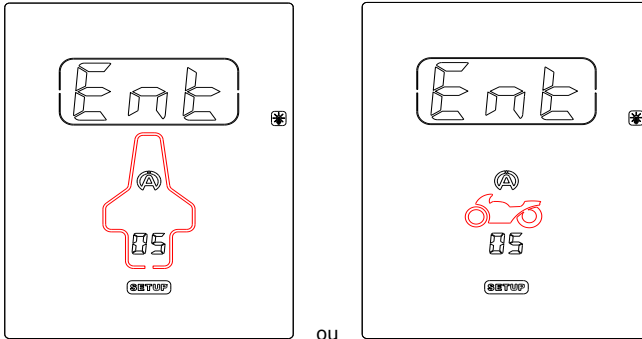
Procedure :



- 1) In one these two windows, press the central button **Ok** to enter in the menu, « Ent » disappears.
- 2) With the button **▽** or **△**, modify the unit,
- 3) Press the central button **Ok** to come out of the menu.

05) Choice of the vehicle :

Procedure :

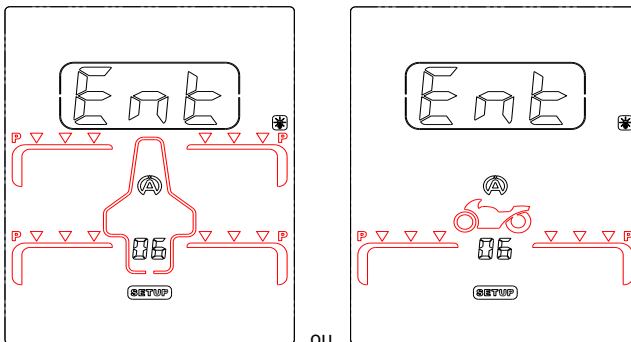


ou

- 1) In one of these two windows, press the central button **Ok** to enter in the menu, « Ent » disappears.
- 2) With the button **▽** or **△**, modify the type of vehicle (Car or Motorbike)
- 3) Press the central button **Ok** to come out of the menu.

06) Configuration of the sequence of the captures :

Procedure :



ou

- 1) In one of these two windows (depending on the menu « 05 »), press the central button **Ok** to enter in the menu, « Ent » disappears.

Note : the explanation below is based on the example of the car.

- 2) The first Icon « P » (pressure) on the front left tyre appears by default blinking (figure 17).

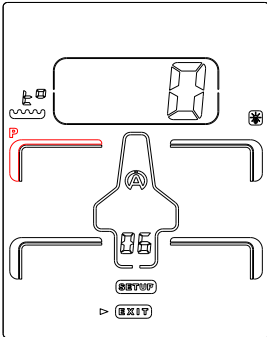


Figure 17

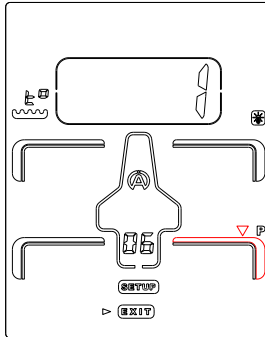


Figure 18

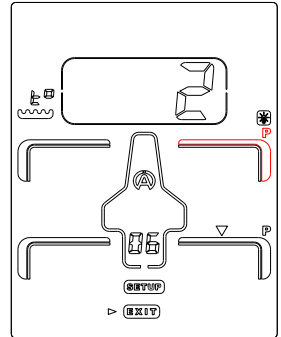


Figure 19

- 3) If you want to program the first capture in another place, choose then another icon on the vehicle. For this, you just need to move with the help of the 4 buttons :




- 4) Press the central button  to confirm your choice (figure 18).

After confirmation, the icon « P » selected freezes, the number 1 show off in the « CADRAN ». Then, another icon appears automatically, blinking, (red arrow, figure 18). If the place of the second capture doesn't suit you, same thing, repeat the operations as explained above (figure 19).

In this way, you can create a combination of captures with the priorities between pressures and temperatures as you want them.

- 5) After having programmed the points of captures as wanted, move on the "EXIT" icon, with the help of the 4 buttons.

- 6) Press the central button  to leave the menu.

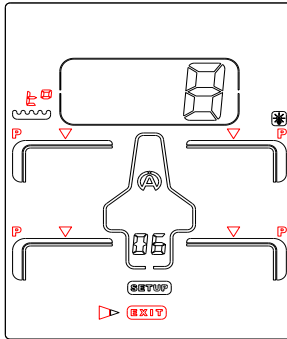
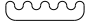




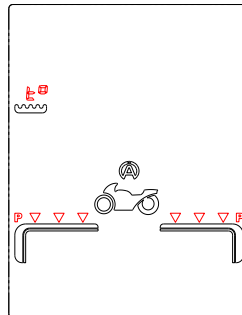
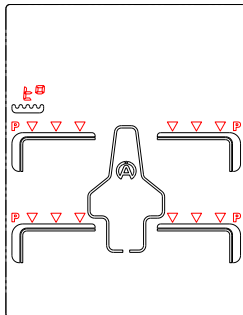
Figure 20

The « figure 20 » shows that 4 captures' points of pressures + 4 captures' points of temperatures have been programmed with the wanted priorities + the capture point of asphalt temperature.

Note :

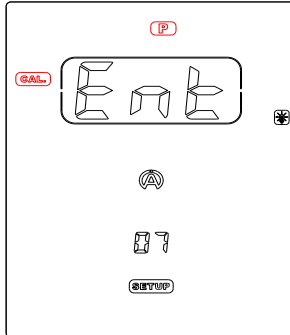
In RECORD mode, the point of capture of the asphalt's temperature  will be chosen automatically at the end of every sequence before  and after  race.

The two figures below represent the available capture places
On the car (left side) and on the motorbike (right side)



07) Calibration of the Pressure sensor :

Procedure :



- 1) In this window, press the central button **Ok** to enter in the menu, « Ent » disappears.
- 2) Press the central button **Ok** to calibrate the sensor of pressure and to leave the menu (figure 23).

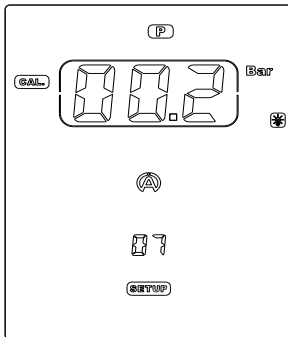


Figure 21

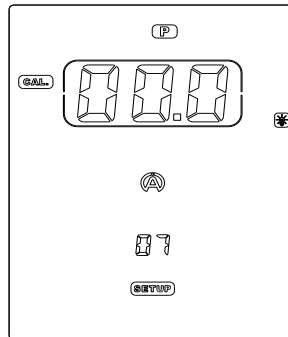


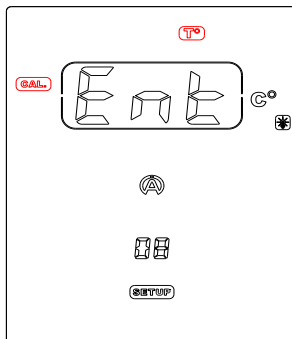
Figure 22




Note :

- It is useful to calibrate the sensor when the FACE indicates a value of pressure whereas no pressure has been entered in the Tyrecontrol (example : figure 21). The mouthpiece of the Tyrecontrol must be free.
- **IMPORTANT :** calibrate the Tyrecontrol with the mouthpiece FREE.

08) Calibration of the Temperature sensor :

Procedure :



- 1) In this window, press the central button  to enter in the menu, « Ent » disappears.
- 2) Connect the sensor of temperature (*figure 23*).
- 3) With the buttons  , adjust the temperature in the « FRAME » so that the displayed temperature corresponds to a temperature of reference (*figure 24*).

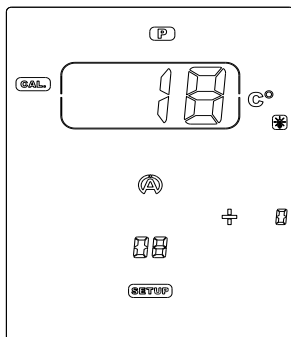


Figure 23

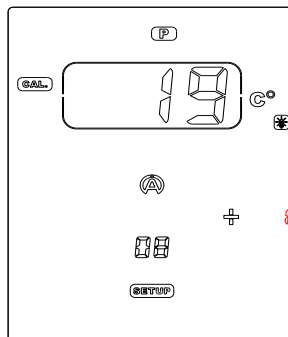


Figure 24

Note :

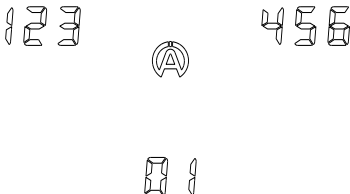
- The temperature of reference must come from a precision device giving temperature.
- The two sensors of these devices must be placed at the same place.
- Wait that the two displayed values stabilize.

- 3) Press the central button  to come out of the menu.

<< 09 >> Information Menu : Serial number and Firmware number of the device

The screen displays the Firmware number in the middle at the bottom (2 digits) and the serial number of the device (6 digits: 3 on the left and 3 on the right).

Example :



Warranty conditions

All our devices have been subject to in-depth factory tests and are covered by a 24-month warranty against manufacturing defects. The warranty comes into force from the date of purchase. The date of purchase is the date stated on the invoice/till receipt given by the seller at the time of sale. The manufacturer undertakes to repair and replace free of charge any parts which have a manufacturing defect during the warranty period. Any defects which cannot be clearly attributed to the material or the manufacturer will be examined at one of our approved after-sales service centres and invoiced depending on the results. The warranty does not apply in cases of device opening, accidental damage, negligence or misuse, inappropriate or incorrect installation or failure to perform the installation in accordance with the instructions contained in the attention note and in events not associated with the rules of operation and use of the device. The warranty will become null and void in cases of repair or handling carried out by unauthorised third parties. Intervention under warranty does not entitle to the device replacement or warranty extension. Intervention under warranty is carried out at one of our approved after-sales service centres or at our head office. In the latter case, the item must reach our establishment postage paid, that is, transport costs shall be paid by the user. The manufacturer undertakes no responsibility for any damage to persons or goods caused by poor installation or incorrect use of the device.

Product modifications

Alfano SA applies a method of ongoing development. Consequently, **Alfano SA** reserves the right to make changes and improvements to any product described in this document without prior notice.

Damages and responsibilities

The products are used under the customer's sole direction and responsibility and therefore damages suffered or caused by the products shall be borne by the customer. No compensation will be paid for removal of enjoyment, and ALFANO cannot be held responsible for the direct or indirect consequences of their use or rendering useless. ALFANO's obligations are duty of care and not a performance obligation.

Disposal

The device must be disposed of with respect for environment. The chronometer and its accessories contain many plastic parts. When the chronometer or one of its accessories no longer functions, they must be dealt with according to the laws of the country. Used batteries must be disposed of in accordance with the regulations in force in your country.



alfano.com

10-03-2019